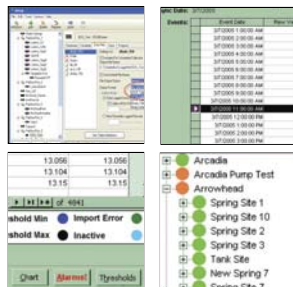




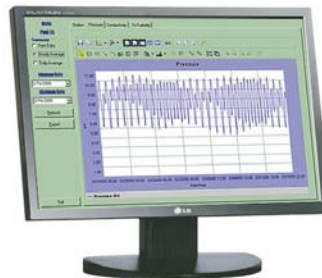
## **Merlin** Advanced Monitoring Software

**Merlin** is a desktop application that collects, displays and manages data from monitoring systems. Merlin consolidates all monitoring data in one location, and provides many tools for viewing and analysis of the data. Merlin was designed to collect data from any data source, including data loggers, remote terminals (RTU), spreadsheets and programmable logic controllers (PLC), and turn it into useful information.

Merlin's graphical interface shows instrument and monitoring status at a glance. View all your data and easily graph trends to instantly identify aberrations and alarms. Combined with graphing right from your browser, you have the most advanced package for managing and sharing information from an unlimited number of data acquisition systems.



Feature	Basic	Pro	Enterprise
Data Importing	X	X	X
Scheduled Data Importing	X	X	X
Time-Stamped Backups	X	X	X
Scale Factors over Multiple Date Ranges	X	X	X
Alarm Thresholds	X	X	X
QA/QC Data Validation	X	X	X
Graphing Package	X	X	X
Transaction Logging	X	X	X
Data Export	X	X	X
Data Archiving	X	X	X
Automatic Status Reports		X	X
E-mailed Alarm Reports with .pdf		X	X
Automatic .jpg and .csv		X	X
Internet Data Synchronization		X	X
SQL Server Backend			X



Merlin provides a "birds eye view" of remote monitoring stations.

- *Multi-Level Project Tree that groups by Project, Station, Sensor and Measurement*
- *Automatic importing of data retrieved from any monitoring system*
- *Displays both raw and scaled values*
- *"Idiot light" icons that display status*
- *Applies scale factors over multiple date ranges*
- *Alarms any data stream with min and max thresholds*
- *Send alarm and status e-mails automatically*
- *Creates and exports .jpg graphics and .csv files for distribution and analysis*
- *Creates multiple backup data sets*
- *Synchronizes multiple databases over the Internet*
- *Logs all transactions*
- *Creates backup copies of raw data*